

## Repair instruction

Description: Thermocouple V1

Part number: 623020

Look for Service Centres, Point of Sale addresses and other information on: [www.thetford.eu](http://www.thetford.eu)

Version:

V1

Date:

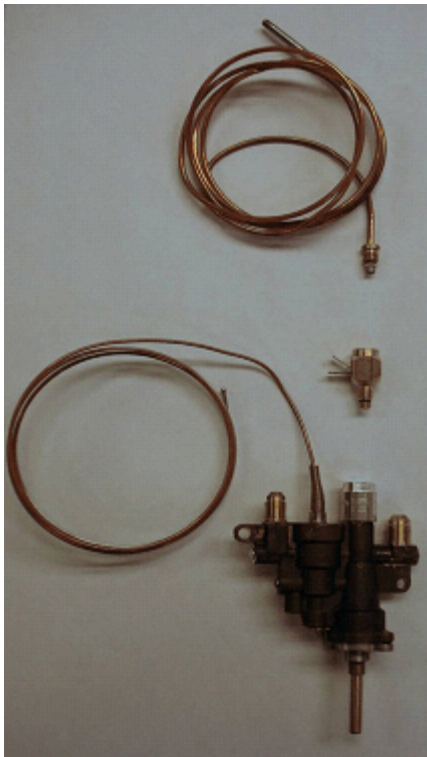
04-03-2010

Tools required:

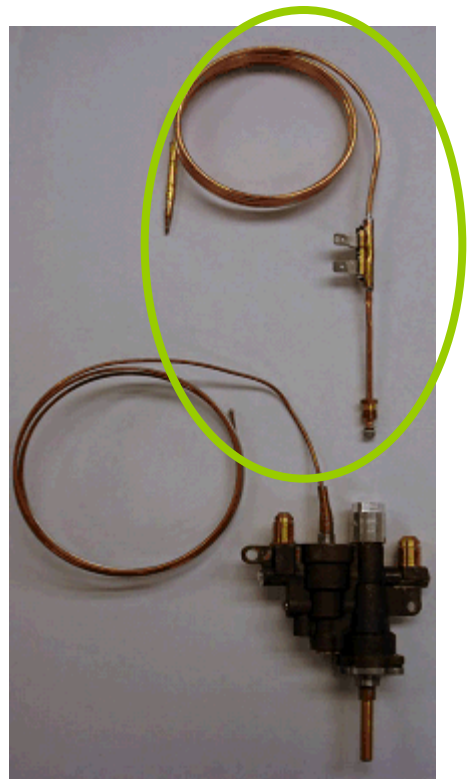
Spanner 7mm



A



B



## Repair instruction

**Description:** Fin clip

**Part Number:** 623023

Look for Service Centres, Point of Sale addresses and other information on: [www.thetford.eu](http://www.thetford.eu)

**Version:**

V1

**Date:**

November 2010

**Tools required:**

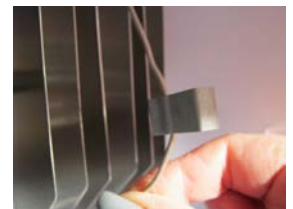
**A**

Note: be aware on which fin the original fin clip is positioned.



**B**

Pull fin clip off the fin.



**C**

Remove capillary tube from fin clip. Note: be careful with bending the capillary tube. In case it cracks, thermostat needs to be replaced.



**D**

Place capillary tube back into new fin clip and push it back onto the fin.



## Repair instruction

**Description:** Latch V1

**Part Number:** 623024-07/627007-90

Look for Service Centres, Point of Sale addresses and other information on: [www.thetford.eu](http://www.thetford.eu)

**Version:**

V1

**Date:**

November 2010

**Tools required:**

Torx T-10, cross headed screw driver

**A**

Remove 2 screws and replace latch.



**B**

Remove 2 screws and replace strike plate.



## Repair instruction

**Description:** Control knob

**Part Number:** 62302507/62302607-30/62568207-30

Look for Service Centres, Point of Sale addresses and other information on: [www.thetford.eu](http://www.thetford.eu)

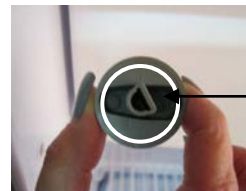
**Version:**

V1

**Date:**

November 2010

**Tools required:**



**A**

Pull knob from axle.

**B**

Make sure the new knob has the same geometry as the knob you removed.

Note: if this is incorrect the indicator of the knob will not match with the icons on the refrigerator.

**C**

Push new knob on axle.

## Repair instruction

**Description:** Bottle retainer

**Part Number:** 62304212

Look for Service Centres, Point of Sale addresses and other information on: [www.thetford.eu](http://www.thetford.eu)

**Version:**

V1

**Date:**

November 2010

**Tools required:**



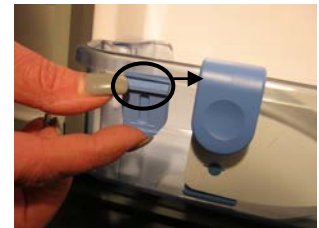
A

Pull both clips, left and right, on bottle retainer towards you which allows the strap bumper to come out. Remove retainer.



B

Position new bottle retainer over door bin. Place the strap bumper underneath the edge of the door bin. Slide strap bumper sideways into the clip of the bottle retainer.



## Repair instruction

**Description:** Freezer door

**Part Number:** 623043-08

Look for Service Centres, Point of Sale addresses and other information on: [www.thetford.eu](http://www.thetford.eu)

**Version:**

V1

**Date:**

November 2010

**Tools required:**

Philips screwdriver



**A**

Remove 2 screws attaching the freezer door hinges to the bottom of the freezer cabinet. Remove freezer door.



**B**

Place freezer door in front of freezer cabinet, pushing it up and inwards, (against the tension of the springs in the hinges), place screws back.



## Repair instruction

**Description:** Thermistor

**Part Number:** 623077

Look for Service Centres, Point of Sale addresses and other information on: [www.thetford.eu](http://www.thetford.eu)

**Version:**

V1

**Date:**

November 2010

**Tools required:**

Note: be aware on which fin the original fin clip is positioned.



**A**

Pull fin clip off the fin



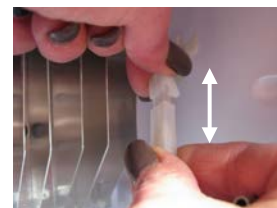
**B**

Remove thermistor from fin clip.



**C**

Disconnect the connector by pushing in clip on the side.



**D**

Push new thermistor in and place fin clip back onto the fin.



## Repair instruction

Description: Flip top cover

Part Number: 623615/623616

Look for Service Centres, Point of Sale addresses and other information on: [www.thetford.eu](http://www.thetford.eu)

Version:

V1

Date:

November 2010

Tools required:



A

Remove vegetable bin, and pull flip top cover from hinge pins.



B

Place new flip top cover, and put vegetable bin back.



## Repair instruction

**Description:** Vegetable bin

**Part Number:** 623617/623618/623619

Look for Service Centres, Point of Sale addresses and other information on: [www.thetford.eu](http://www.thetford.eu)

**Version:**

V1

**Date:**

November 2010

**Tools required:**



**A**

Remove vegetable bin and new place new one.

Note: Lift up flip top cover completely when placing the new bin.



## Repair instruction

**Description:** Cap

**Part Number:** 62362208

Look for Service Centres, Point of Sale addresses and other information on: [www.thetford.eu](http://www.thetford.eu)

**Version:**

V1

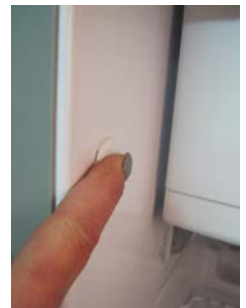
**Date:**

November 2010

**Tools required:**

A

Remove cap with your finger and press new cap in.



## Repair instruction

**Description:** Clip shelf large

**Part Number:** 62362508/62362608

Look for Service Centres, Point of Sale addresses and other information on: [www.thetford.eu](http://www.thetford.eu)

**Version:**

V1

**Date:**

November 2010

**Tools required:**

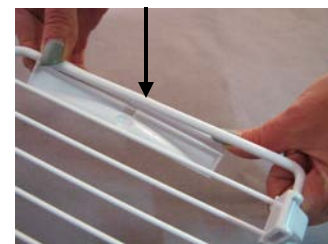
**A**

Hold shelf with one hand, push up shelf clip with your finger and simultaneously lift shelf up.



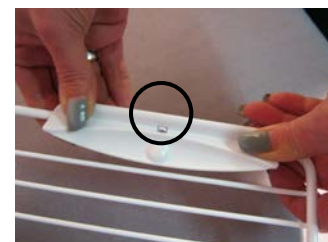
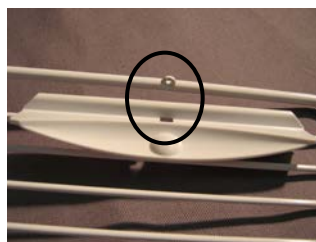
**B**

Remove shelf from refrigerator and push clip of the shelf.



**C**

Press new clip in and make sure that the nodge on the shelf matches the hole in the clip.



**D**

Replace shelf in desired position on the left side. Lower shelf on the right side to the same height. Push the clip down into the recess.



## Repair instruction

**Description:** Bottom latch small

**Part Number:** 62400127

Look for Service Centres, Point of Sale addresses and other information on: [www.thetford.eu](http://www.thetford.eu)

**Version:**

V1

**Date:**

November 2010

**Tools required:**

**A**

Open door and turn bottom latch completely inwards.



**B**

Pull bottom latch in direction of the door and replace.



## Repair instruction

Description: Interior light cover

Part Number: 624002

Look for Service Centres, Point of Sale addresses and other information on: [www.thetford.eu](http://www.thetford.eu)

Version:

V1

Date:

November 2010

Tools required:



A

Push in the 2 clips on the side of the cover, and remove cover.



B

Press new cover in.



## Repair instruction

**Description:** Interior light bulb

**Part Number:** 624003

Look for Service Centres, Point of Sale addresses and other information on: [www.thetford.eu](http://www.thetford.eu)

**Version:**

V1

**Date:**

November 2010

**Tools required:**



**A**

Push in the 2 clips on the side of the cover, and remove cover.



**B**

Remove light bulb fitting.



**C**

Press new light bulb and cover in.



## Repair instruction

**Description:** Combustion flap

**Part Number:** 624020/624021

Look for Service Centres, Point of Sale addresses and other information on: [www.thetford.eu](http://www.thetford.eu)

**Version:**

V1

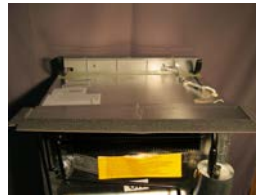
**Date:**

November 2010

**Tools required:**

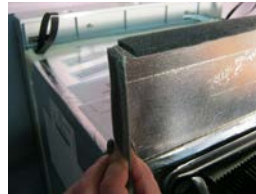
**A**

Remove protective layer from tape, and attach combustion flap on top rear of refrigerator.



**B**

Bend foam strips (4x) in correct position.



## Repair instruction

**Description: Screw / Speednut insulation cover**

**Part Number: 624026/624027**

Look for Service Centres, Point of Sale addresses and other information on: [www.thetford.eu](http://www.thetford.eu)

**Version:** V1

**Date:** November 2010

**Tools required:** Spanner

**A**

Push speed nut over insulation cover, make sure the holes line up.



**B**

Position the insulation cover on top of the burner box, lining up the holes in the burner box and the speednut.



**C**

Place the screw and tighten with spanner



## Repair instruction

**Description:** Glass fuse

**Part Number:** 624030

Look for Service Centres, Point of Sale addresses and other information on: [www.thetford.eu](http://www.thetford.eu)

**Version:**

V1

**Date:**

November 2010

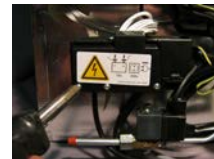
**Tools required:**

Torx T-10 screwdriver, Philips screwdriver



**A**

Remove 4 screws from black cover on power board housing.



**B**

Remove 2 screws on side attaching the power board housing to the refrigerator.



**C**

Remove 2 screws from strain relief on power board housing, and remove cover.



**D**

Replace glass fuse.



## Repair instruction

**Description:** Shelf food retainer

**Part Number:** 624456-08

Look for Service Centres, Point of Sale addresses and other information on: [www.thetford.eu](http://www.thetford.eu)

**Version:**

V1

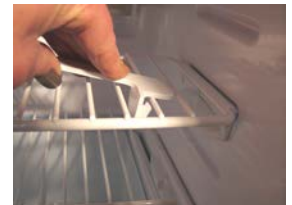
**Date:**

November 2010

**Tools required:**

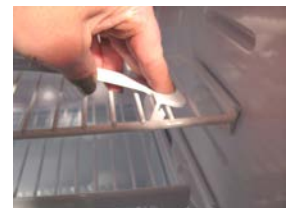
**A**

Tilt shelf food retainer backwards onto the shelf. Bend shelf food retainer to release it from the shelf.



**B**

Place new shelf food retainer and slide clip underneath the shelf wire. Bend shelf food retainer on other side to connect it to the shelf.



## Repair instruction

**Description:** Cabinet side seal

**Part Number:** 624476/624477/624478

Look for Service Centres, Point of Sale addresses and other information on: [www.thetford.eu](http://www.thetford.eu)

**Version:**

V1

**Date:**

November 2010

**Tools required:**

A

Remove protective layer from tape, and attach side seal to side rear end of refrigerator.



Note: closed side of seal should point backwards.



## Repair instruction

**Description:** Cap freezer bolt

**Part Number:** 62447908

Look for Service Centres, Point of Sale addresses and other information on: [www.thetford.eu](http://www.thetford.eu)

**Version:**

V1

**Date:**

November 2010

**Tools required:**

Flat screwdriver



A

Remove cap with flat screwdriver and press new cap over bolt.



## Repair instruction

**Description:** Storage strap

**Part Number:** 624679-07

Look for Service Centres, Point of Sale addresses and other information on: [www.thetford.eu](http://www.thetford.eu)

**Version:**

V1

**Date:**

November 2010

**Tools required:**



**A**

Pull latch back and pull up storage strap to remove it from hinge pin.



**B**

Push new storage strap onto the hinge pin.



## Repair instruction

**Description:** Hinge freezer door

**Part Number:** 624680-08

Look for Service Centres, Point of Sale addresses and other information on: [www.thetford.eu](http://www.thetford.eu)

<b>Version:</b>	V1
<b>Date:</b>	November 2010
<b>Tools required:</b>	Philips screwdriver

**A**

Remove 2 screws attaching the freezer door hinges to the bottom of the freezer cabinet. Remove freezer door.



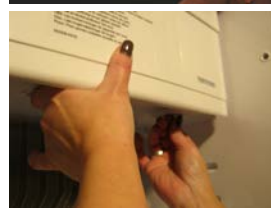
**B**

Remove both hinges by taking out the 2 screws



**C**

Place freezer door in front of freezer cabinet, pushing it up and inwards, (against the tension of the springs in the hinges), place screws back.



## Repair instruction

**Description:** Displayboard LCD

**Part number:** 626972

Look for Service Centres, Point of Sale addresses and other information on: [www.thetford.eu](http://www.thetford.eu)

**Version:**

**Date:**

November 2010

**Tools required:**

Cross Head Screwdriver,

**A**

When exchanging the Display Board there is no need to remove the fridge however we do advise to isolate the fridge from the mains and 12v supply



**B**

Remove the oval perspex display by using a small flat screwdriver. Push the screwdriver behind the on/off button and pull forward



**C**

Once the first couple of clips have been released the overlay simply pops out



D

Now the overlay has been removed you will see two holes in the grey control board housing.



E

Fully remove the two screws, one found at the bottom of each hole



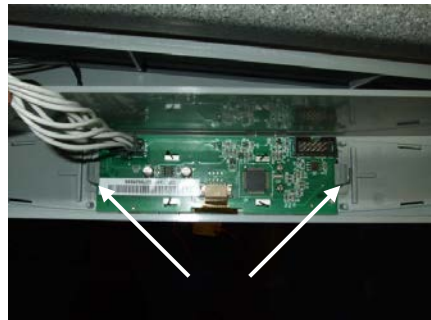
F

The grey control board housing can now be removed taking care not to pull to far from the fridge as the cable is still attached



G

Looking inside the control board housing from the back you will notice the LCD display is held in by two clips



H

Simply hold the clips back and remove the display



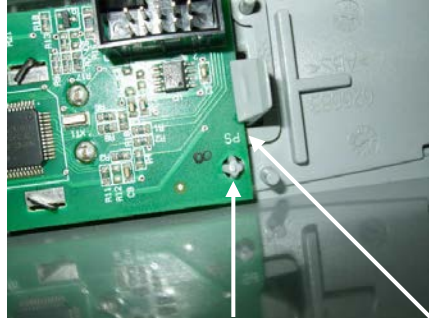
I

Unclip the white wiring loom from the display board by holding the black plug, this way the wiring loom shouldn't get damaged



J

Replace the display board into the control board housing ensuring the holes sit over the lugs and the clips are firmly back in place



K

Replace the control board housing taking care as not to trap any of the wires before screwing it back in place



L

Re-attach the overlay by clipping back in place. The fridge can now be reconnected to the electricity supply and tested



## Repair instruction

**Description:** Overlay LCD

**Part Number:** 626975

Look for Service Centres, Point of Sale addresses and other information on: [www.thetford.eu](http://www.thetford.eu)

**Version:**

V1

**Date:**

November 2010

**Tools required:**

Small flat screwdriver



**A**

Place screwdriver between on/off button and overlay.  
Note: be careful not to scratch the overlay.



**B**

Move screwdriver upwards and simultaneously put your finger between overlay and control panel.  
Pull overlay forward on the bottom and down to release the top clips.



**C**

(1) Push side clips of overlay in position,  
(2) Push in top clips.  
(3) Push in bottom clips.



## Repair instruction

**Description:** Latch V2

**Part Number:** 626985-07

Look for Service Centres, Point of Sale addresses and other information on: [www.thetford.eu](http://www.thetford.eu)

**Version:**

V1

**Date:**

November 2010

**Tools required:**

Torx T-10 , Cross headed screw driver



A

Remove 2 screws and replace latch.

B

Remove 2 screws and replace strike plate.

## Repair instruction

**Description:** Storage strap V2

**Part Number:** 62698607-90

Look for Service Centres, Point of Sale addresses and other information on: [www.thetford.eu](http://www.thetford.eu)

**Version:**

V1

**Date:**

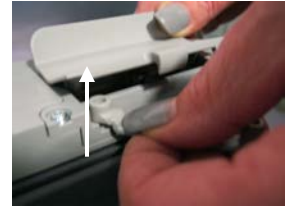
November 2010

**Tools required:**



**A**

Turn storage strap outwards, and pull it up.



**B**

Place new storage strap and push it in position



## Repair instruction

**Description:** Blade fuse

**Part Number:** 626996/626998/624028/624029

Look for Service Centres, Point of Sale addresses and other information on: [www.thetford.eu](http://www.thetford.eu)

**Version:**

V1

**Date:**

November 2010

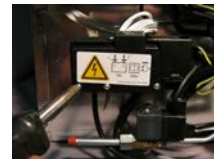
**Tools required:**

Torx T-10 screwdriver, Philips screwdriver



**A**

Remove 4 screws from black cover on power board housing.



**B**

Remove 2 screws on side attaching the power board housing to the refrigerator.



**C**

Remove 2 screws from strain relief on power board housing, and remove cover.



**D**

There are 3 fuses on the power board. Check the fuses, and replace the blown fuse.



## Repair instruction

**Description:** Flue exhaust long/short

**Part Number:** 624480/627008

Look for Service Centres, Point of Sale addresses and other information on: [www.thetford.eu](http://www.thetford.eu)

<b>Version:</b>	V1
<b>Date:</b>	November 2010
<b>Tools required:</b>	Spanner

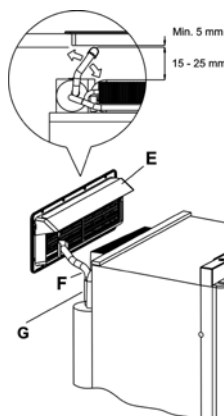
**A** Loosen clamp screw.



**B** Remove flue exhaust from refrigerator by pulling it upwards.



**C** Place new flue exhaust and tighten the clamp screw by hand. Replace the refrigerator in the vehicle, position flue exhaust as shown in drawing. Tighten the clamp screw.  
Note: for further instructions we advise to read our installation manual.



## Repair instruction

**Description:** Interior light switch

**Part Number:** 629722

Look for Service Centres, Point of Sale addresses and other information on: [www.thetford.eu](http://www.thetford.eu)

**Version:**

V1

**Date:**

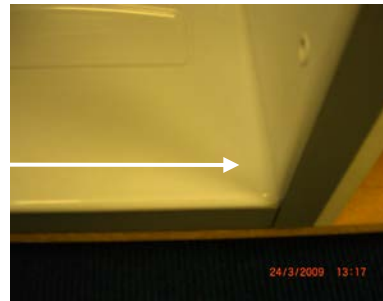
November 2010

**Tools required:**

Cross Head Screwdriver,

**A**

On the N180 fridge the reed switch for the interior light is situated in the bottom right hand corner of the cabinet beneath the lining, therefore the fridge needs to be disconnected and laid down in order to change it. This needs to be done by a qualified competent gas engineer



**B**

Once the fridge has been laid down you will see an envelope flap towards the front of the fridge, remove the tape holding the cardboard in place to reveal the wiring loom



**C**

The reed switch is located at the right hand side and has 2 black wires going to it



**D**

Simply unclip the existing faulty reed switch



E

Chase the wiring back to the plug and unclip the reed switch ensuring you pull the white male and female plugs and not the wires



F

Connect the new Reed switch



G

Once the new part has been reconnected to the wiring loom clip the reed switch back into place



H

Once it is back in place ensure the reed switch is pushed up as far as it will go,



I

Replace all the wiring into the channel and tape the cardboard back in place before re-installing the fridge.



## Repair instruction

**Description: Gas Valve Automatic V5**

**Part number: 630440**

Look for Service Centres, Point of Sale addresses and other information on: [www.thetford.eu](http://www.thetford.eu)

**Version:**

**Date:**

November 2010

**Tools required:**

Cross Head Screwdriver, 14mm, 12mm, 11mm  
Spanner,

**A**

The fridge should be isolated by a competent, qualified person from the gas supply before work commences



**B**

Start by loosening the gas inlet tube by turning the nut anti clockwise to the valve, making sure the valve is held firmly in place



**C**

Secondly loosen the gas pipe to the burner again ensuring the gas valve cant move during disconnection



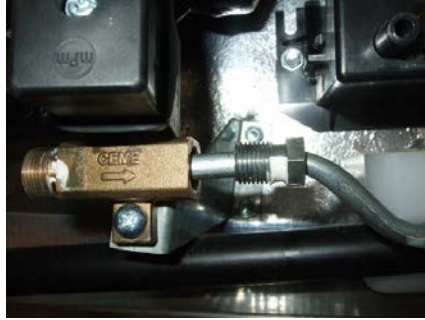
D

The gas inlet tube can now be removed from the gas valve



E

Completely unscrew the fastening that holds the burner pipe to the gas valve



F

Remove the plug from the valve by undoing the screw on the front



G

Remove the screw that holding the gas valve to the galvanized bracket



H

The gas valve can now be removed by sliding it away from the burner tube



I

Attach the new valve to the burner pipe, screw it back to the galvenised bracket and re-attach the plug to the gas valve



J

Fasten the inlet tube to the valve ensuring a secure sound connection. Using a 17mm spanner and a Torque setting of 20Nm +2/-0



K

Tighten the nut that holds the burner pipe to the gas valve again ensuring a secure connection. Using a 11mm spanner and a Torque setting of 10Nm +0.5/-0



L

The fridge can now be re-installed. Before testing the fridge please ensure a soundness test is carried out by a competent qualified person.



## Repair instruction

**Description:** Gas assembly / Burner

**Part number:** 631248/631249/623019/623058

Look for Service Centres, Point of Sale addresses and other information on: [www.thetford.eu](http://www.thetford.eu)

**Version:**

V1

**Date:**

November 2010

**Tools required:**

Cross Head Screwdriver, 14mm, 12mm, 11mm  
Spanner

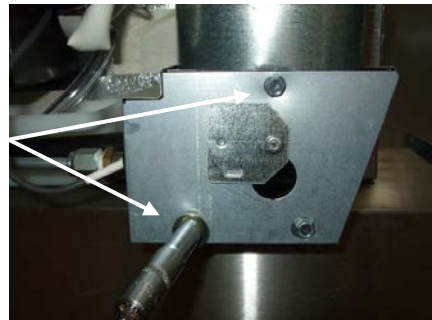
**A**

Before work commences please ensure the fridge is isolated from the gas supply, this must be carried out by a competent qualified person, and that you have good access to the back of the fridge



**B**

Start by removing the two 7mm screws from the burner box housing



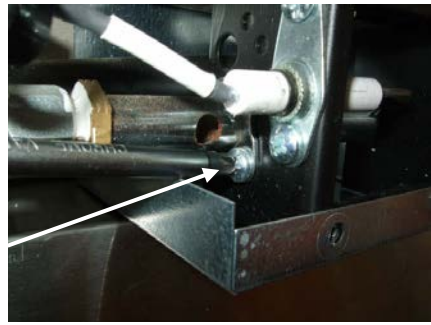
**C**

Remove the cover taking care not to damage electrode lead



D

Remove the one screw that is holding the burner to the burner box



E

Remove the plug from the gas valve by undoing the screw and pulling away.

Please be aware that on certain models the gas inlet tube may need to be removed



F

Undo the screw which is holding the valve to the galvanised bracket

G

The whole assembly can now be removed by sliding the burner out of the burner box housing



H

When inserting the new assembly please ensure that the burner sits back in the slot in the burner box



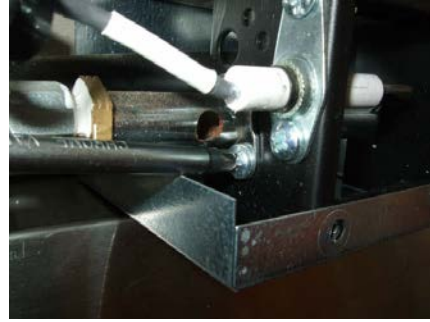
I

The valve can now be re-attached to the galvanised bracket and the black plug screwed onto the new valve making sure the seal is correctly in place, where necessary re-attach the inlet tube using a 17mm Spanner and a torque setting of 20Nm +2/-0



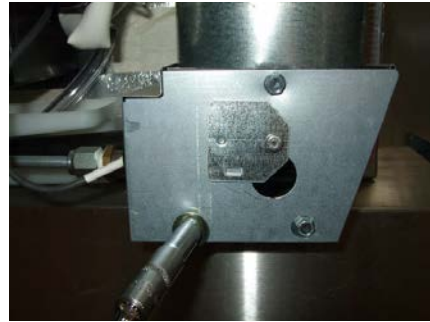
J

Secure the burner to the housing by replacing the screw ensuring there is no movement from the burner



K

The burner box cover can now be put back in place, making sure the electrode lead is free from kinks and passing through the black shroud



L

The fridge can now be re-installed. Before testing the fridge please ensure a soundness test is carried out by a competent qualified person.

