

Repair instruction

Description: C2 C3 Mechanism

Part number: 16379-74

Look for Service Centers, Point of Sale addresses and other information on: www.thetford-europe.com

Version: V1

Date: 05/05/2006

Tools required:  

A

C2/C3 toilet.

Pull the waste tank out of the Cassette toilet by lifting up the yellow clip.



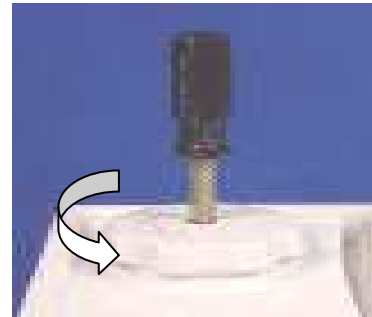
B

Place a flat screwdriver under the small plastic insert, which is in the middle of the flush knob, and take it off.

Unscrew the screw inside the flush knob, with a philips head screwdriver.



Flush knob



C

Complete flush knob can be taken out now. After the flush knob, the mechanism housing has to be taken out. **Note : This can only be done from the outside.**

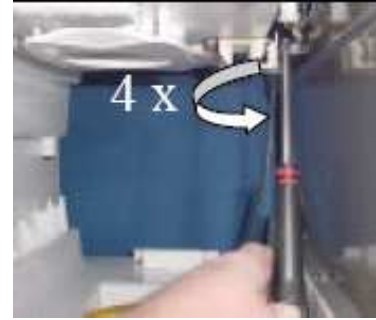
When looking inside the Cassette toilet from the outside, the mechanism is screwed to the underside of the water tank.



D

Mechanism housing which is located inside the Cassette toilet with four screws (on each corner).

Remove the four screws located on the mechanism, allowing it to drop down. **Note:** On Cassette toilets which are produced between 1987 and 1989, 5 screws should be removed.

**F**

Pull the white connector loose from the mechanism, and press the connector into the new mechanism.

**G**

Screw the mechanism back on its place.

**H**

Place the flush knob back (in the same position as on the photo, see print on the knob) and, screw it back into the toilet with the crosshead screwdriver.

